

Compliance Status:

Pol 04 Reduction of night time light pollution	Pass
Ene 03 Energy efficient external lighting	Fail
Hea 01 Internal and external lighting levels	Pass

BREEAM

P28389 - New Sports Pavilion, Shakespeare Road, Braunstone



Qty	Range	Lamp type	LAMP Lumens	Circuit Watts	LmW	LOR	Total Lumens	ULR	Upward Lmns	RA	Hour Per Day	CO ₂ (Tonnes)	Kwhour
8	Auriga	60w LED (ST)	5700	60.0	97.50	71.1%	32421.6	0.4%	129.6964	60	12	1.15	2192.40
12	Alfresco (hood)	25w LED	2081	25.0	12.97	15.1%	3770.772	6.9%	260.183288	60	12	0.72	1314.00

Total Installation Lumens		36192.372	389.86968	Total ULR	1.08%	Total CO ₂ per year (Tonnes)	1.86
Table 1 compliance		Environmental zone	E3	Total Electrical consumption (Kwh)		0.78	
		Target	Achieved	Status	Total Electrical consumption per year (Kwh)		3,416.40
					Average luminaire lumens per circuit Watt		40.40

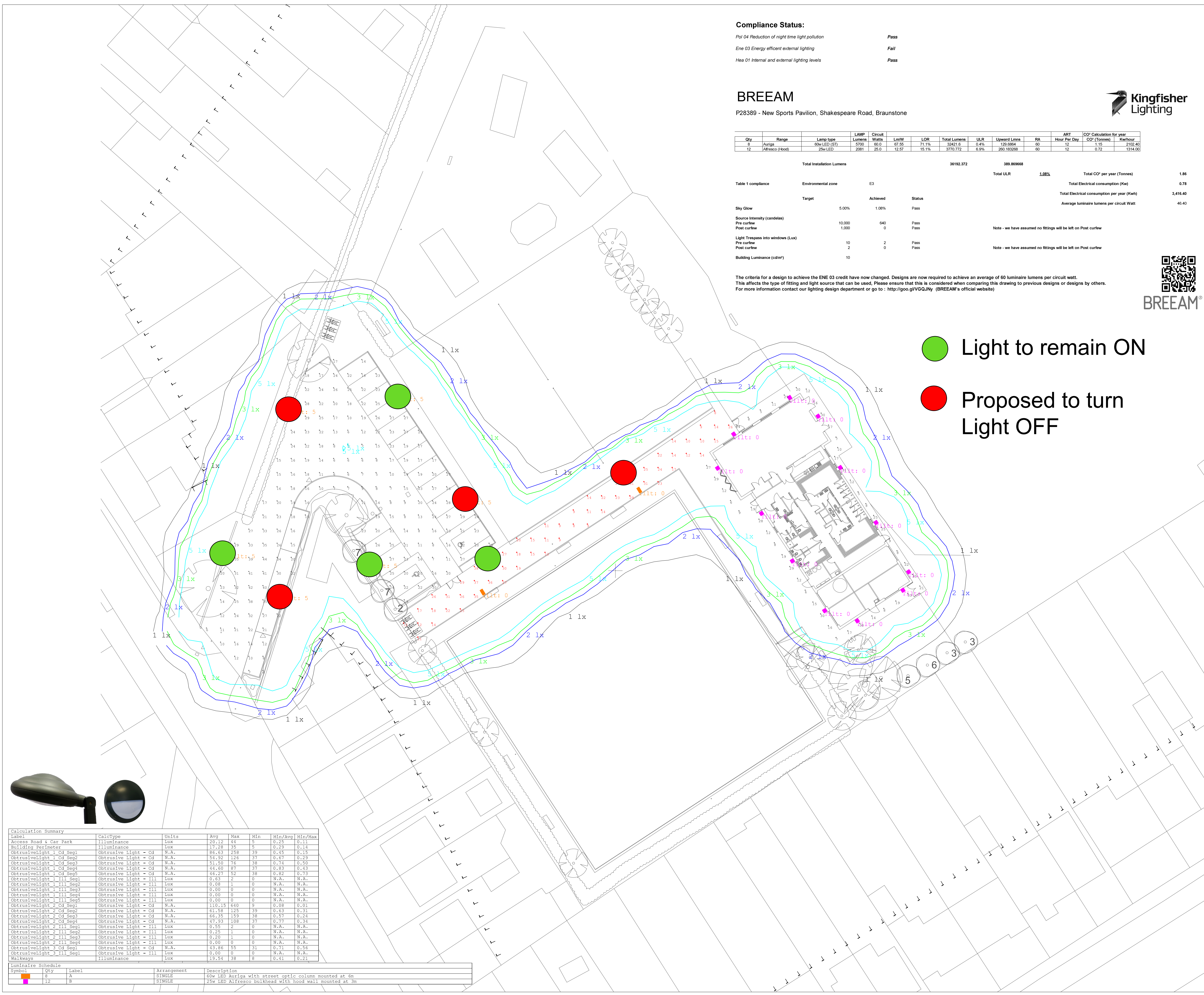
Source Intensity (candelas)	10,000	640	Pass	Note - we have assumed no fittings will be left on Post curfew
Pre curfew	1,000	0	Pass	
Light Trespass into windows (Lux)	10	2	Pass	Note - we have assumed no fittings will be left on Post curfew
Pre curfew	2	0	Pass	
Building Luminance (cd/m ²)	10			

The criteria for a design to achieve the ENE 03 credit have now changed. Designs are now required to achieve an average of 60 luminaire lumens per circuit watt. This affects the type of fitting and light source that can be used. Please ensure that this is considered when comparing this drawing to previous designs or designs by others. For more information contact our lighting design department or go to : <http://go.givgq.ny> (BREEAM's official website)



Shakespeare Park Car Park

- Light to remain ON
- Proposed to turn Light OFF



Label	CalcType	Units	Avg	Max	Min	Min/Avg	Min/Max
Access Road & Car Park	Illuminance	Lux	20.12	44	5	0.25	0.11
Building Perimeter	Illuminance	Lux	17.28	35	5	0.29	0.14
ObtrusiveLight_1_Cd_Seg1	Obtrusive Light - Cd	N.A.	86.63	258	39	0.45	0.15
ObtrusiveLight_1_Cd_Seg2	Obtrusive Light - Cd	N.A.	54.92	126	37	0.67	0.29
ObtrusiveLight_1_Cd_Seg3	Obtrusive Light - Cd	N.A.	51.50	76	38	0.74	0.50
ObtrusiveLight_1_Cd_Seg4	Obtrusive Light - Cd	N.A.	44.60	87	37	0.82	0.43
ObtrusiveLight_1_Cd_Seg5	Obtrusive Light - Cd	N.A.	46.27	52	38	0.82	0.73
ObtrusiveLight_1_Ill_Seg1	Obtrusive Light - Ill	Lux	0.63	2	0	N.A.	N.A.
ObtrusiveLight_1_Ill_Seg2	Obtrusive Light - Ill	Lux	0.08	1	0	N.A.	N.A.
ObtrusiveLight_1_Ill_Seg3	Obtrusive Light - Ill	Lux	0.00	0	0	N.A.	N.A.
ObtrusiveLight_1_Ill_Seg4	Obtrusive Light - Ill	Lux	0.00	0	0	N.A.	N.A.
ObtrusiveLight_1_Ill_Seg5	Obtrusive Light - Ill	Lux	0.00	0	0	N.A.	N.A.
ObtrusiveLight_2_Cd_Seg1	Obtrusive Light - Cd	N.A.	110.15	640	9	0.08	0.01
ObtrusiveLight_2_Cd_Seg2	Obtrusive Light - Cd	N.A.	61.58	125	39	0.63	0.31
ObtrusiveLight_2_Cd_Seg3	Obtrusive Light - Cd	N.A.	66.35	159	38	0.57	0.24
ObtrusiveLight_2_Cd_Seg4	Obtrusive Light - Cd	N.A.	47.93	108	37	0.73	0.34
ObtrusiveLight_2_Ill_Seg1	Obtrusive Light - Ill	Lux	0.55	2	0	N.A.	N.A.
ObtrusiveLight_2_Ill_Seg2	Obtrusive Light - Ill	Lux	0.25	1	0	N.A.	N.A.
ObtrusiveLight_2_Ill_Seg3	Obtrusive Light - Ill	Lux	0.20	1	0	N.A.	N.A.
ObtrusiveLight_2_Ill_Seg4	Obtrusive Light - Ill	Lux	0.00	0	0	N.A.	N.A.
ObtrusiveLight_3_Cd_Seg1	Obtrusive Light - Cd	N.A.	43.86	55	31	0.71	0.56
ObtrusiveLight_3_Ill_Seg1	Obtrusive Light - Ill	Lux	0.00	0	0	N.A.	N.A.
Walkways	Illuminance	Lux	19.54	38	8	0.41	0.21

Symbol	Qty	Label	Arrangement	Description
A	8	A		60w LED Auriga with street optic column mounted at 6m
B	12	B	SINGLE	25w LED Alfresco bulkhead with hood wall mounted at 3m

A	For Planning Application	July 16	NR	CW
rev.	description	date	drawn	approved

Information approval tender contract construction

Axis Mechanical & Electrical Consulting Engineers
 No.8 Poplars Court
 Lenton Lane
 Nottingham
 NG7 2RR
 United Kingdom
 tel: +44 (0) 115 9791875
 fax: +44 (0) 115 9249179
 email: mail@axisconsult.co.uk
 web: www.axisconsult.co.uk



client
 HSSP ARCHITECTS

project
 NEW SPORTS PAVILION
 SHAKESPEARE ROAD
 BRAUNSTONE

drawing
 PROPOSED EXTERNAL LIGHTING

drawn	approved	date	scale
N.R.	C.W.	JULY '16	1:250 @ A1
drawing ref.	revision		
AX1680-E-01	A		

NO DIMENSIONS TO BE SCALED FROM THIS DRAWING

Thorpe Astley Car Park



EXTERNAL WORKS/WORKS SET:
Note name of the wall/fencing/curb/kerb
Dashed & solid lines show the site boundary & location of the

- Soft landscaped areas
- 400 x 400mm concrete paving
- Gravel margin
- Tree excavation

- Light to remain ON
- Proposed to turn Light OFF

6	Light 10A, 11A	25.11.00	1000
7	Car parking spaces reduced to 100 spaces	22.09.00	1000
8	Proposed 100 spaces	25.03.00	1000
9	Final plan updated	23.01.00	1000
10	Scale changed to 1:200	25.01.00	1000
11	External works key added	25.01.00	1000
12	Final issue	25.01.00	1000

Client: **Blaby District Council**

Architect: **PICK EVERARD**

Project Manager: **Charlotte Innes**

Site Manager: **Lee Innes**

Address: **Thorpe Astley Community Centre**

Contact: **01533 441225**

Drawing No:	1000
Scale:	1:200 of A1
Client Reference:	040252/A/100